

State Schools Nursing Service



What is the State Schools Nursing Service?

The nursing service is provided to state schools by the Department of Education to support reasonable adjustments for students with specific health needs to safely access and participate in education. Services include collaborative risk assessment and development of individual health plans that reflect daily routines, as well as step-by-step emergency health plans.

State Schools Registered Nurses (SSRNs) provide support and training for school staff to manage a specific health procedure such as the use of gastrostomy devices. Working collaboratively with students, their families, school staff and treating health teams, SSRNs help to minimise the impact of the student's health needs on their learning. Ongoing support and refresher training is also provided.

Who is eligible for nursing support?

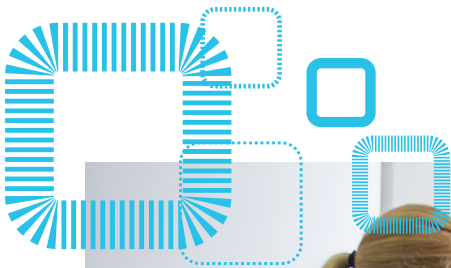
The State Schools Nursing Service (SNS) is available for students enrolled in any Queensland state school or registered for an early childhood development program (ECDP). Students who require a specific

health procedure or intervention during school hours or whose health condition is not easily managed without nursing support may be eligible for nursing services.

What services are available?

Building and maintaining school capability to support student inclusion and safety is a high priority. Nursing services are available to support a range of health conditions such as (but not limited to):

- enteral device feeding/medication administration e.g. gastrostomy/nasogastric
- urinary catheterisation or urostomy/Mitrofanoff support
- airway/breathing support e.g. tracheostomy and oral/nasal suctioning
- oxygen therapy/oxygen concentrator support
- stoma or collection bag/attachment device e.g. for colostomy/ileostomy
- diabetes support including glucose monitoring, insulin administration, glucagon injection
- epilepsy support and seizure first aid which includes administration of emergency medication e.g. Midazolam
- complex asthma, allergy and anaphylaxis support – SSRNs are also available for practical training in



the use of adrenaline auto-injectors (e.g. Epipen) and asthma first aid (e.g. Ventolin).

How are nursing services requested?

Parents should discuss the provision of nursing services with the principal of their child's school.

The principal (or delegate), in consultation with the parent or carer, determines that services are required and completes a Student referral – Request for nursing services. Schools can access this form on the intranet [therapy and nursing page](#) (search 'Nursing referral'). SSRNs will determine if the referral meets the eligibility criteria for service provision.

Questions about services or the referral process should be directed to a local SSRN or the Regional Clinical Nurse Consultant. Contact details are contained in this brochure.

Who do SSRNs liaise with?

With permission from the student, parent or carer, the SSRN will liaise and work collaboratively with:

- **the student's doctor or treating health team** to understand the specifics of the student's health support needs and to develop the student's Individual or Emergency Health Plan
- **the classroom teacher and other supporting school staff** to ensure the student's health needs are understood and to promote self-care and independence
- **relevant allied health professionals** to provide a multidisciplinary approach for improved student outcomes
- **school leaders** to support students with specific health needs to transition from early years to primary and Year 6 to high school.

What support is available for school camps, excursions and off-site activities?

When planning for camps and excursions, SSRNs are able to provide additional support including:

- advice for risk assessment e.g. camp checklists
- training for procedures normally attended to at home
- development of camp specific health plans.

Note: For the best outcome, please contact the SSRN early in the planning phase.



“Your flexibility, expertise and thorough delivery of training ensured our rather anxious staff have had their fears allayed and feel 100% capable of supporting students with complex health needs.”

Terese Jarman, Minimbah State School

Is there a cost for nursing services?

The department provides nursing services at no cost to schools or families. The service is focused on supporting reasonable adjustments to enable students to participate and learn on the same basis as all other students.

Who to contact?

For assistance, schools should contact the nearest State Schools Registered Nurse. See the contact details contained in this brochure.

State Schools **Nursing Service** contact details

Metropolitan Region

Acacia Ridge State School – (07) 3717 4111
Ipswich Special School – (07) 3813 5777
Geebung Special School – (07) 3632 1777
Warilda Precinct, Woolloowin – (07) 3215 9222
Mt Ommaney Special School – (07) 3717 6888
Nursery Rd State Special School, Mt Gravatt – (07) 3308 6333
Narbethong State Special School, Buranda – (07) 3823 0777
Red Hill Special School – (07) 3291 9333

North Coast Region

Albert State School, Maryborough – (07) 4120 0888
Bundaberg Special School – (07) 4155 5222
Cooroy State School – (07) 5472 2100
Currimundi Special School (07) 5491 0222
Maroochydore State School – (07) 5475 1555
Nambour Special School – (07) 5444 9333
Pialba State School – (07) 4197 7777
Pine Rivers Special School – (07) 3285 0555
Thabeban State School – (07) 4150 8333
Tullawong State School – (07) 5431 4666
Woody Point Special School – (07) 3480 4333

Darling Downs South West Region

Clifford Park Special School, Toowoomba – (07) 4614 5333
Dalby South State School – (07) 4672 3848
Stanthorpe State High School – (07) 4681 5888
Kingaroy Regional Office, Kingaroy – (07) 4172 9700
Toowoomba West Special School – (07) 4638 6333

South East Region

Beauresert State School – (07) 5540 1111
Beenleigh Special School – (07) 3380 1111
Logan City Special School – (07) 3489 6333
Mudgeeraba Special School – (07) 5559 3333
Pimpama State Primary College – (07) 5549 5333
Redlands District Special School – (07) 3488 6333
Southport Special School – (07) 5552 0333
Upper Coomera State College – (07) 5580 7555

Central Queensland Region

Emerald North State School – (07) 4988 2333
Glenmore State School, Rockhampton – (07) 4923 0666
Mt Morgan Central State School – (07) 4912 5333
Rosella Park School, Gladstone – (07) 4976 8333
Tannum Sands State High School – (07) 4979 9777
Victoria Park State School, Mackay – (07) 4951 6333

North Queensland Region

Proserpine State School – (07) 4940 6333
Townsville Community Learning Centre – (07) 4759 4111
Mount Isa Central State School – (07) 4437 3222

Far North Queensland Region

Cairns State Special School – (07) 40367444

Regional Clinical Nurse Consultants

Central Queensland – (07) 4842 8347
Darling Downs South West – (07) 46163771
Far North Queensland – 0436 928 890
Metropolitan – (07) 3436 6286
North Queensland – (07) 4842 8347
North Coast – (07) 5352 9281
South East – (07) 5617 6140

Statewide

Senior Nurse Manager – 0436 914 659
CNC (Advisor) – 0436 914 651

